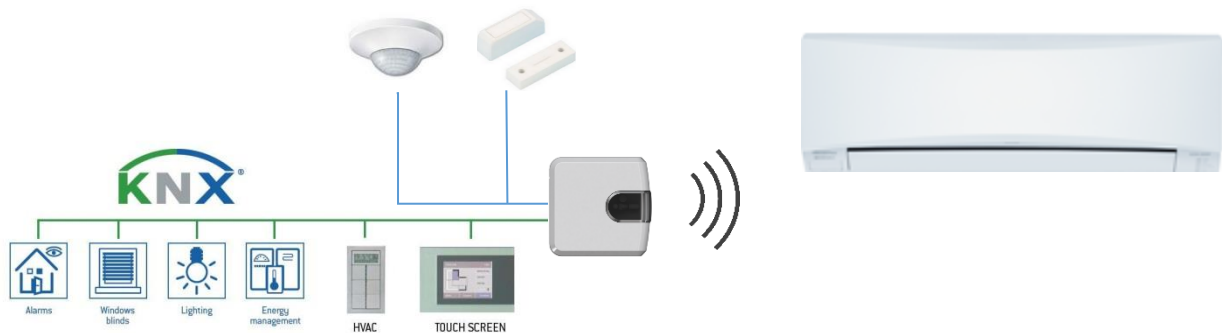




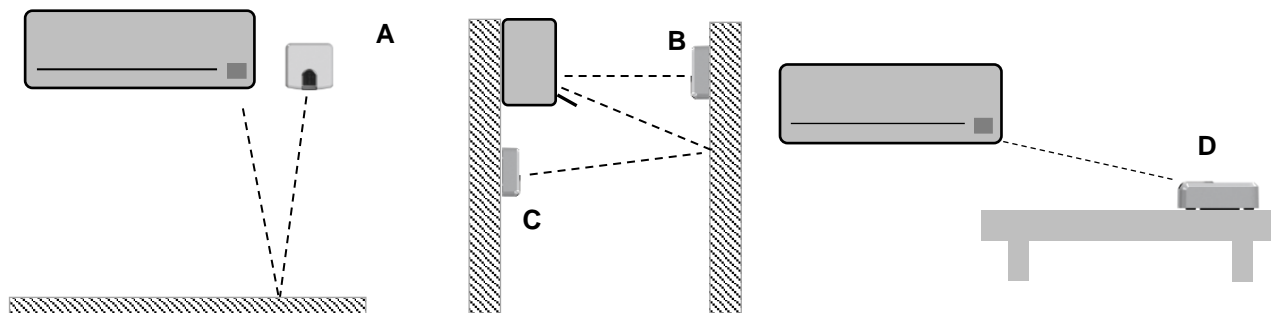
IntesisBox® IS-IR-KNX-1i

KNX interface for Air Conditioners control over IR



IntesisBox® IS-IR-KNX-1i allows monitoring and control of Air Conditioners from KNX installations. Compatible with most AC units with an IR receiver (check section 3 for more information).

Small dimensions and easy installation. It can be installed side-by-side with the AC unit (case A), in front of the AC unit (case B), under the AC unit (case C) or on a desktop position (case D). On the other side, it connects directly to the KNX TP-1 (EIB) bus.



Great flexibility of integration into your KNX projects. Configuration is made directly from ETS, the database of the device comes with a complete set of communication objects allowing, from a simple and quick integration using the basic objects, allowing a simple and quick integration.

Two binary inputs for potential-free contacts provide the possibility to integrate many types of external devices for window status control (window contacts) and occupancy (presence sensor).

Includes a USB connector for fast programming download.

IntesisBox® IS-IR-KNX-1i will allow you offering a full integration of the air conditioning in your KNX projects at a very affordable cost.

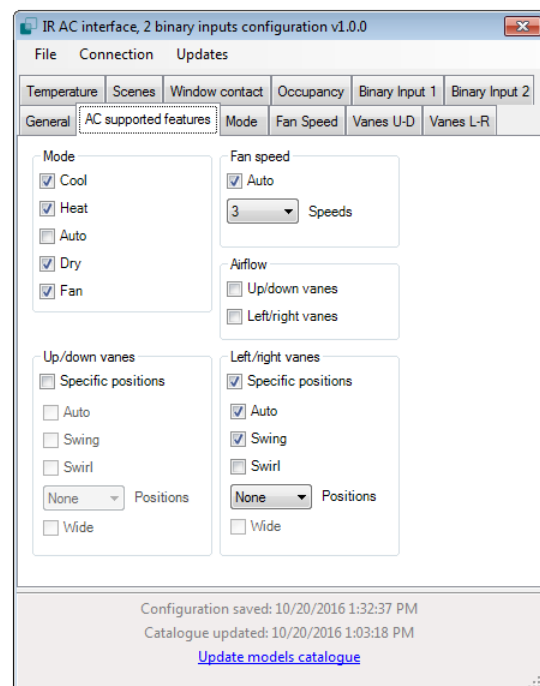
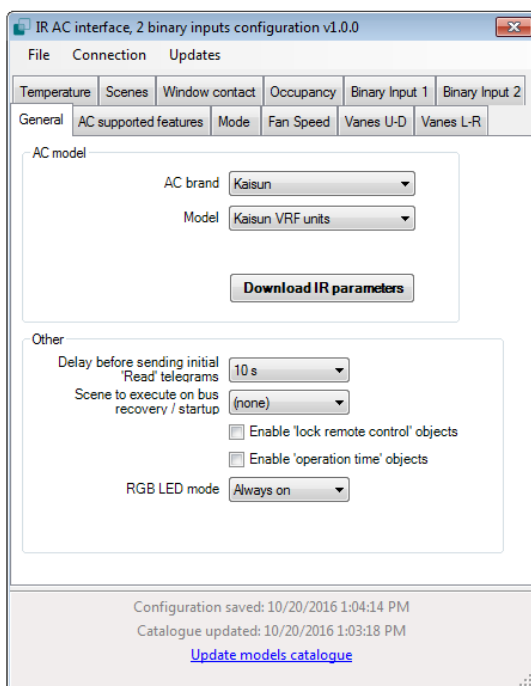
1. Communication objects

The ETS database of the device comes with multiple communication objects allowing great flexibility of integration.

IR AC interface, 2 binary inputs	
1:	Control_ On/Off [DPT_1.001] - 0-Off;1-On
2:	Control_ Mode [DPT_20.105] - 0-Aut;1-Hea;3-Coo;9-Fan;14-Dry
3:	Control_ Mode Cool/Heat [DPT_1.100] - 0-Cool;1-Heat
10:	Control_ Fan Speed [DPT_5.001] - Thresholds: 100*(n+0'5)/N...
11:	Control_ Fan Speed Man/Auto [DPT_1.002] - 0-Manual;1-Auto
36:	Control_ Vanes L-R Man/Auto [DPT_1.002] - 0-Manual;1-Auto
45:	Control_ Vanes L-R Swing [DPT_1.002] - 0-Stop;1-Swing
50:	Control_ Setpoint Temperature [DPT_9.001] - °C
52:	Control_ Ambient Temperature [DPT_9.001] - °C
70:	Status_ On/Off [DPT_1.001] - 0-Off;1-On
71:	Status_ Mode [DPT_20.105] - 0-Aut;1-Hea;3-Coo;9-Fan;14-Dry
72:	Status_ Mode Cool/Heat [DPT_1.100] - 0-Cool;1-Heat
79:	Status_ Fan Speed [DPT_5.001] - 100*n/N %
80:	Status_ Fan Speed Man/Auto [DPT_1.002] - 0-Manual;1-Auto
104:	Status_ Vanes L-R Man/Auto [DPT_1.002] - 0-Manual;1-Auto
113:	Status_ Vanes L-R Swing [DPT_1.002] - 0-Stop;1-Swing
117:	Status_ AC Setpoint Temperature [DPT_9.001] - °C
118:	Status_ IntesisBox Ambient Temperature [DPT_9.001] - °C
119:	Status_ IntesisBox Reference Temperature [DPT_9.001] - °C
120:	Status_ Error/Alarm [DPT_1.005] - 0-No alarm;1-Alarm
121:	Status_ Error Code [2-byte signed value] - Error Code
122:	Status_ Error Text [DPT_16.001] - Error Text

2. Plugin

Multiple parameters can be configured to ensure the maximum flexibility for the integration, not only in functionality of the device but in visibility of objects in ETS for a more comfortable integrator's work. Configuration can be done using our own plugin.



3. List of compatible AC indoor units.

A list of indoor unit model references compatible with IS-IR-KNX-1 and their available features can be found in:

http://intesis.com/pdf/IntesisBox_IS-IR-xxx-1_AC_Compatibility.pdf

4. Technical Specifications

Enclosure	ABS (V-0). 2,1 mm thickness PC (V-2). 1 mm thickness
Dimensions	81 x 78 x 28 mm
Weight	76 g
Color	Ivory white
Power supply	29V DC, 17mA Supplied through KNX bus
Mounting	Wall and desktop
LED indicators	1 x Device status and KNX programming
Push buttons	1 x KNX programming.
Binary inputs	2 x binary inputs for potential-free contacts. Signal cable length: 5m unshielded, may be extended up to 20m with twisted. Compliant with the following standards: IEC61000-4-2: level 4 - 15kV (air discharge) - 8kV (contact discharge) MIL STD 883E-Method 3015-7: class3B
Console port	Mini USB port for console usage
Configuration	Configuration with ETS
Operating Temperature	From 0°C to 40°C
Operating humidity	<93% HR, no condensation
Stock humidity	<93% HR, no condensation

5. Dimensions

